

RHYTHM SHEET:

1-TI-TE

1 TI TE 2 TI TE 3 TI TE 4 TI TE 1

 1 E & 2 E & 3 E & 4 E & 1

 R L R R L R R L R R L R R

1

4

8

10

13


16

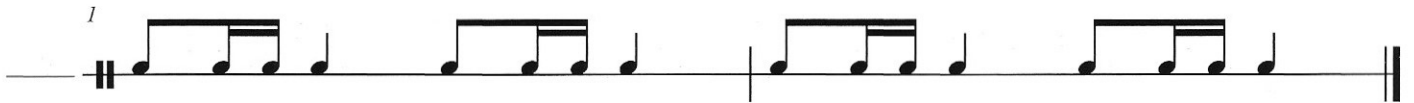
20

25

RHYTHM SHEET:

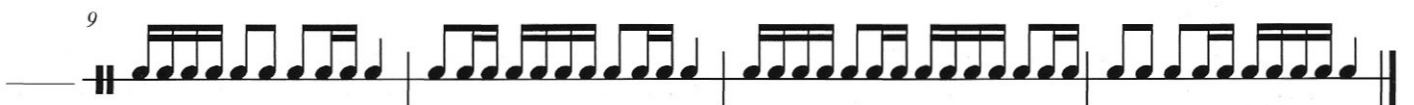
1-TE-TA


1 TE TA 2 TE TA 3 TE TA 4 TE TA | 1
1 & AH 2 & AH 3 & AH 4 & AH | 1
R R L R R L R R L R R L R

1 

3 

6 

9 

13 

18 

22 

RHYTHM SHEET:

TI-TE-TA

TI TE TA TI TE TA TI TE TA TI TE TA 1
E & AH E & AH E & AH E & AH 1
L R L L R L L R L L R

1

4

7

10

15

17

20

23

27

RHYTHM SHEET:

1-TI-TA

4/4

1 TI TA 2 TI TA 3 TI TA 4 TI TA | 1
1 E AH 2 E AH 3 E AH 4 E AH 1
R L L R L L R L L R L L R

1

4

8

13

15

18

21

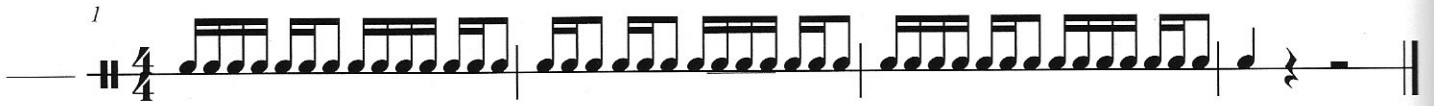
2/4

25

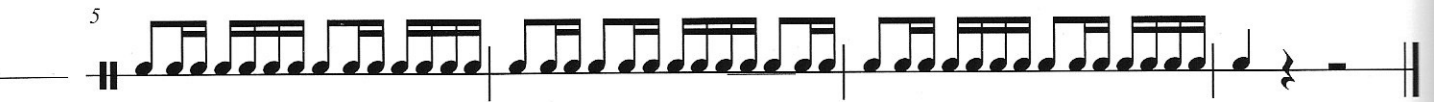
3/4

RHYTHM SHEET: 3 NOTE PERMUTATIONS # 1

1



5




9



12



16



21



26



30



RHYTHM SHEET:
3 NOTE PERMUTATIONS #2

1

4/4

5

4/4

9

4/4

14

4/4

18

4/4

23

4/4

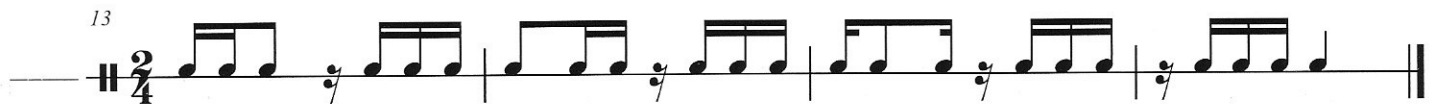
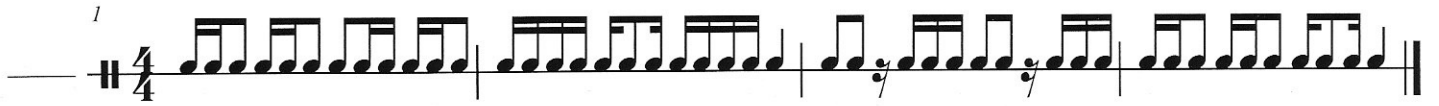
28

4/4

32

4/4

RHYTHM SHEET: 3 NOTE PERMUTATIONS #3



RHYTHM SHEET:

WAIT FOR IT #2

1

4/4

6

4/4

12

4/4

18

6/4

21

6/4

23

4/4

27

4/4

29

5/4

33

5/4

36

7/4

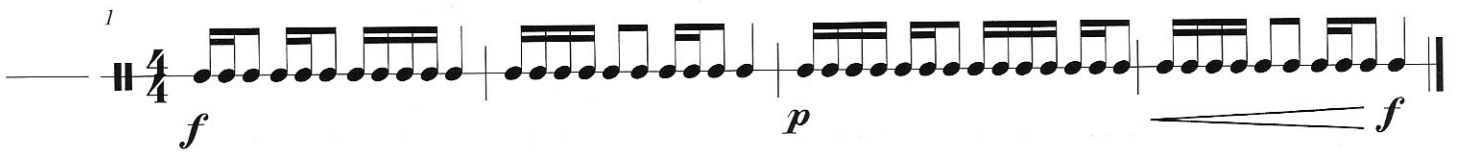
40

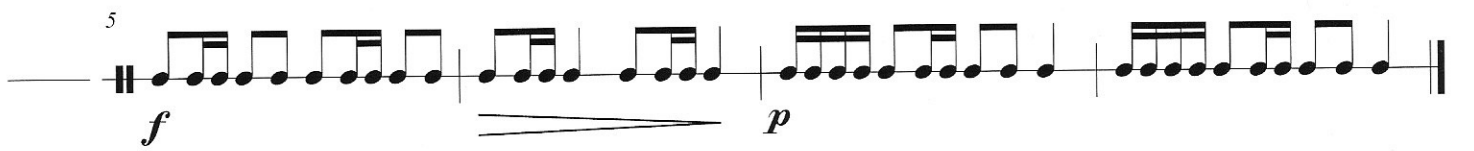
7/4

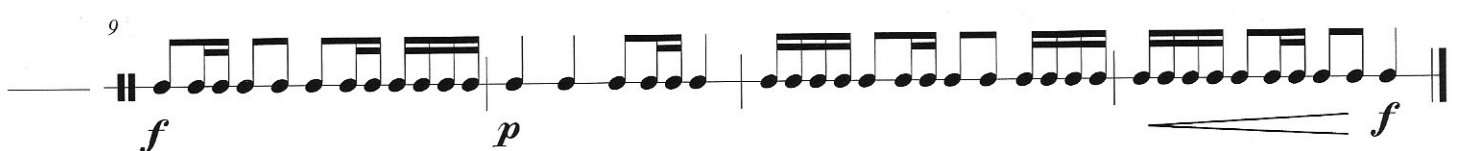
43

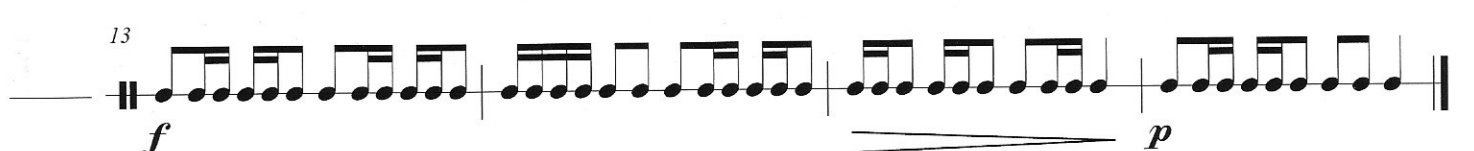
4/4

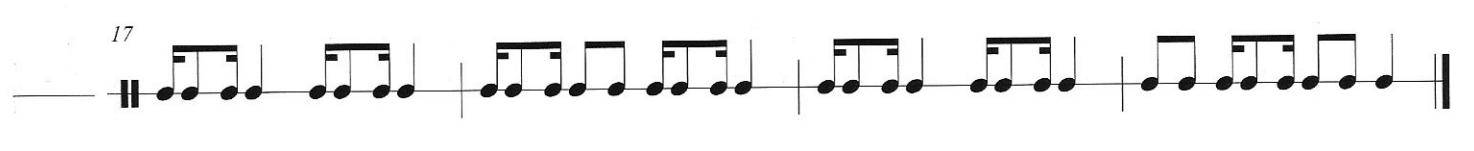
RHYTHM SHEET: CHECKPOINT 2

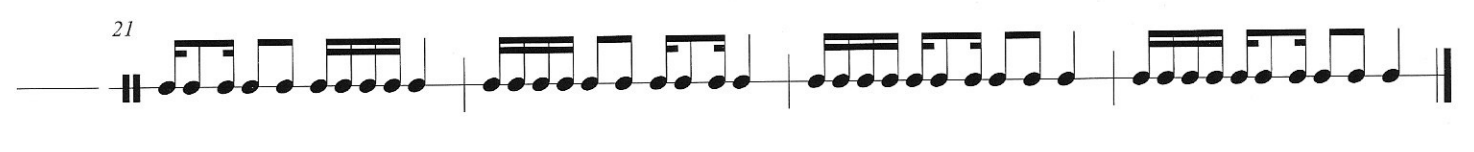
1 

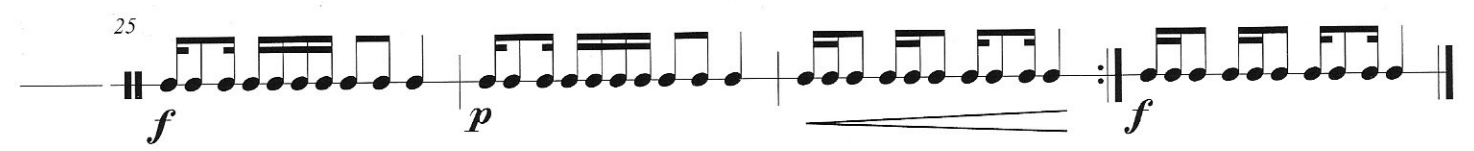
5 

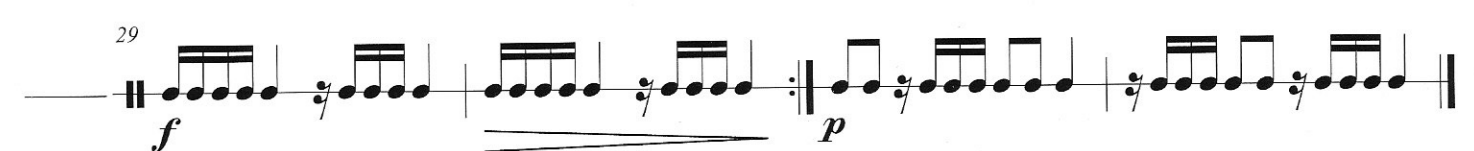
9 


13 

17 

21 

25 

29 

33 

RHYTHM SHEET:

1 - TI

4
1 TI
1 E
R L
2 TI
2 E
R L
3 TI
3 E
R L
4 TI
4 E
R L

1

4

8

11

13

16

18

 2
 4

23

 3
 4

RHYTHM SHEET:

TE - TA

TE TA TE TA TE TA TE TA
& AH & AH & AH & AH
R L R L R L R L

1

4

8

11

13


16

18

23

RHYTHM SHEET:

TI - TE

4/4 
TI TE TI TE TI TE TI TE
E & E & E & E &
L R L R L R L R

1 

4 

8 

11 

13 

16 

18 **2/4** 

23 **3/4** 

RHYTHM SHEET:

1 - TA

4/4

1 TA 2 TA 3 TA 4 TA
1 AH 2 AH 3 AH 4 AH
R L R L R L R L

1

4

8

11

13

16

18

2/4

23

3/4

26

RHYTHM SHEET: 2 NOTE PERMUTATIONS # 1

Five staves of rhythmic notation, each starting with a double bar line and a 4/4 time signature. The notation consists of eighth notes and rests, with 'R' and 'L' labels below the notes to indicate the hand used. The first staff shows a sequence of eighth notes: R L R L R L R L R L R L R L. The second staff shows eighth notes with rests: R L / R L / R L / R L. The third staff shows eighth notes with rests: L R / L R / L R / L R. The fourth staff shows eighth notes with rests: R L / R L / R L / R L. The fifth staff shows eighth notes with rests: R L R L R L R L.

A series of rhythmic exercises, each on a new staff. Exercise 1 is in 4/4 time and consists of eighth notes and rests. Exercise 4 is in 4/4 time and consists of eighth notes and rests. Exercise 8 is in 4/4 time and consists of eighth notes and rests. Exercise 12 is in 2/4 time and consists of eighth notes and rests. Exercise 17 is in 4/4 time and consists of eighth notes and rests. Exercise 21 is in 3/4 time and consists of eighth notes and rests. Exercise 26 is in 4/4 time and consists of eighth notes and rests.

RHYTHM SHEET: 2 NOTE PERMUTATIONS #2

A rhythm sheet for a 4/4 time signature, featuring 35 measures of music. The notation is organized into ten horizontal staves, each beginning with a measure number. The music consists of rhythmic patterns of eighth and sixteenth notes, often grouped in beams. Many notes have a 'y' symbol below them, indicating a grace note. The patterns are complex and varied, involving different groupings of eighth and sixteenth notes. Each staff concludes with a double bar line and a fermata over the final note, followed by a rest for the remainder of the measure.

1
4
5
9
12
14
18
21
23
26
28
32
35

RHYTHM SHEET: 2 NOTE PERMUTATIONS #3

1 

5 

8 

11 

13 

17 

21 

24 

28 

33 

RHYTHM SHEET:

WAIT FOR IT #3

1

6

12

18

21

23

27

29

33

36

40

43

RHYTHM SHEET:

CHECKPOINT 3

1 *f* *p*

5 *f* *p* *mp*

9 *f* *p*

13 *f* *p*

17 *f* *p*

22 *mf* *pp* *ff*

26 *p* *mp*

30 *f* *mf*

34 *p* *pp* *f*

RHYTHM SHEET:

TI

4/4

TI
E
L

TI
E
L

TI
E
L

TI
E
L

1

4

8

11

13

16

18

2/4

23

3/4

26

RHYTHM SHEET:

TA

4/4

TA
AH
L

TA
AH
L

TA
AH
L

TA
AH
L

1

4

8

11

13

16

18

2/4

25

3/4

28